

kovil®

Kovil Oy
Taitajantie 2
FIN-57210 Savonlinna
Finland
Tel. +358-(0)15-578 40
Fax +358-(0)15-578 421

INSTALLATION INSTRUCTIONS

Vehicle information:

Make (manufacturer): **Mercedes Benz**
Model(s): **GLK 2009-**
Type(s): **X204**

Towbar information:

Product No (Version): **35126L (-)**
EC type: **KL037**
EC approval No: **e11*94/20*7824*00**
Vertical mass on coupling S: **max. 80 kg** (See vehicle data)
D-value D: **max. 11.0 kN**
Weight of towbar: **23 kg**

D -value equals e.g. C = 2000 kg and T = 2552 kg.

Follow also vehicle specified restrictions (see registration document and other data of vehicle).
D -value of towbar must not be exceeded.

D= D -value [kN]

T= Maximum mass of vehicle [kg]

C= Maximum mass of centre axle trailer -
Vertical mass (S) on coupling [kg]

$$D = T \times C \times 9.81 / ((T + C) \times 1000)$$

$$T = C \times D \times 1000 / ((C \times 9.81) - (1000 \times D))$$

$$C = T \times D \times 1000 / ((T \times 9.81) - (1000 \times D))$$

General instructions:

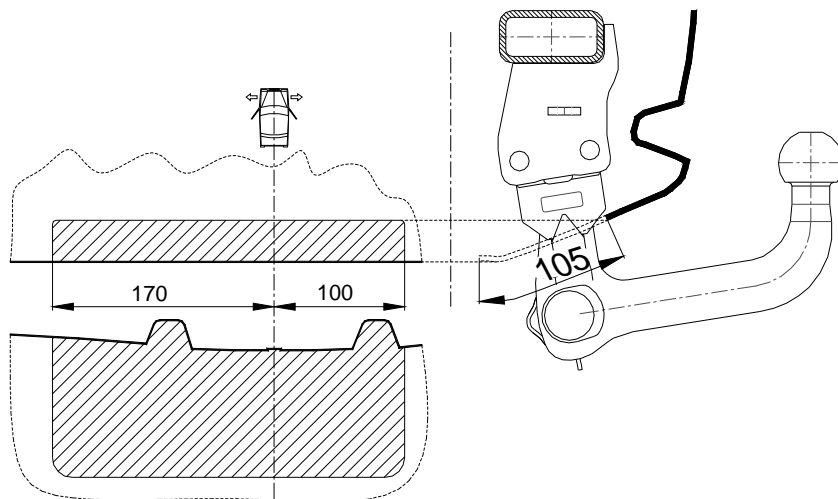
READ INSTALLATION INSTRUCTIONS BEFORE INSTALLING THE TOWBAR!

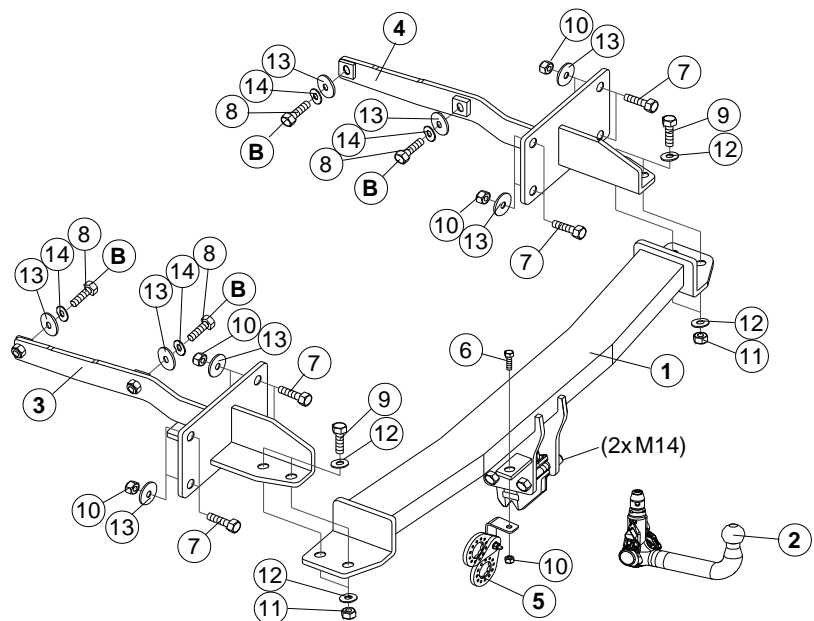
- Remove underseal or other thick coating on contact area between bodywork and towbar. Treat bare sections (and drilled holes) with thin anti-corrosive coating.
- Clean threads of welded nuts and screws before assembly.
- Installation instructions and other operating and maintenance instructions, if enclosed, shall be kept with vehicle documents.
- Coupling ball must be kept clean and greased.

Notice!

- Constructional changes to towbar or to its assembly are forbidden. Defective towbar must be replaced with a new one together with complete assembly set.
- Smallest diameter of coupling ball must not be less than 49 mm to any direction.
- **Manufacturer's responsibility shall not concern any damage caused by incorrect installation or use of towbar.**

A





Installation set:

Pos	Qty	Part
1	1	Cross beam
2	1	Ball part (AL-KO 3KS2-K6)
3	1	Side part left
4	1	Side part right
5	1	Socket holder (#77100)
6	1	Screw M10 x 25
7	8	Screw M10 x 35
8	4	Screw M10 x 40
9	4	Screw M12 x 40
10	9	Lock nut M10
11	4	Lock nut M12
12	8	Washer 13 x 24
13	12	Washer 11 x 33
14	4	Spring washer M10

Tightening torque:

M6 - 8.8	10 Nm
M8 - 8.8	30 Nm
M10 - 8.8	47 Nm
M12 - 8.8	90 Nm
M14 - 8.8	130 Nm
M16 - 8.8	195 Nm
M10 x 1,25 - 8.8	40 Nm
M12 x 1,25 - 8.8	70 Nm
M12 x 1,5 - 8.8	80 Nm
M14 x 1,5 - 8.8	135 Nm

Appendices:

- 1 Mounting manual (3KS)

Notice! Unpack the installation set and check before assembly that all parts are included.

For removing parts from vehicle see detailed instructions in workshop manual!

Hint: Follow installation instructions for electric wiring kit and install wires while mounting the towbar

1. Demount from trunk room (if existing): mat, floor upholstery, spare wheel, step shield, tool box and side panels at the rear.

Demount tail lights.

Demount rear bumper: Release bumper supports at lower edge of bumper, screws and plastic rivets in fenders, nuts in rear panel (on trunk room side) and possible wires to bumper.

Demount collision beam from rear panel (need not be remounted).

Remove rubber plugs that cover holes **B** in trunk room.

2. Cut openings in packings at rear panel for mounting side parts left (3) and right (4).
Insert side parts (3) and (4) into side frames, and mount from trunk room into holes **B** loosely with washers (13), spring washers (14) and screws (8).
Mount side parts (3) and (4) to rear panel loosely with screws (7), washers (13) and nuts (10).
3. Mount cross beam (1) to side parts (3) and (4) with screws (9), washers (12) and nuts (11).
4. Align all parts and tighten all screws/nuts carefully to the right torque, see table.
5. Tighten seams between cross beam and rear panel with underseal.
6. Make a recess in rear bumper according to sketch **A**.
Mount bumper back to vehicle and check mounting and demounting of ball part (2).
7. Mount socket holder (5) to cross beam (1) with screw (6) and nut (10).
(Mount electric wiring kit, check function of turnable socket holder with socket.)
8. Re-install vehicle in reverse order.
9. Ball part (2) will be installed and maintained according to enclosed manual. Follow the instructions frequently.

NOTE! Crossbeam prevents use of original towing bracket on rear side, towbar can be used for towing according to road traffic act.